



# AUSPICIOUS BROCADE

Stick to the original  
Designer Recommendation  
Light luxury wall cloth

42

SUXIANG







**Title:** Special Yarn Jacquard Textile Wallcovering

**Craft:** 6.2S Color Spun Yarn + 1250D Wool-like Color Spun Yarn

**Texture:** Rough Fabric Texture, Weave Texture

**Style:** Wabi-Sabi

**Composition:** 70% polyester, 30% linen

## **Sensory Experience:**

- 1.**The fabric utilizes special textured yarn with a linen-like texture, fully showcasing the material and aesthetic beauty on a simple plain weave structure. The intertwined lines create a visually rugged style with a gradual sense of weightiness, imbuing a greater sense of value.
- 2.**In the space, it exudes a natural, rustic, and tranquil atmosphere with hints of warmth, complementing primitive wood grain furniture. It expresses the beauty of simplicity while maintaining a natural serenity.
- 3.**The overall sensory experience is gentle and mild, offering an unprecedented sense of calmness with its delicate texture. The smooth transition between objects in the space enhances intimacy, catering to various sensory perceptions and fostering a closer relationship between people and the environment.









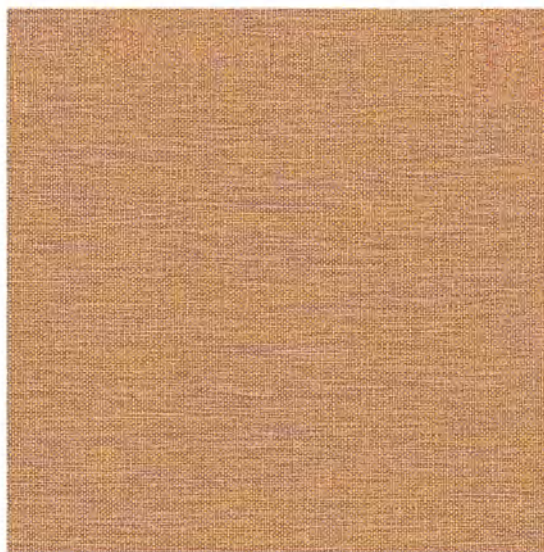








SX4202



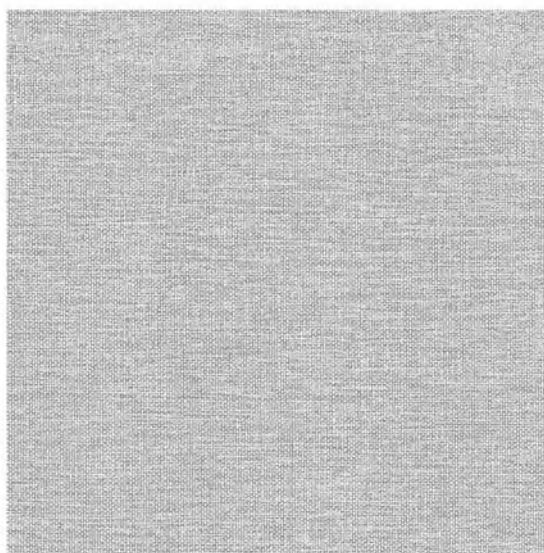
SX4203



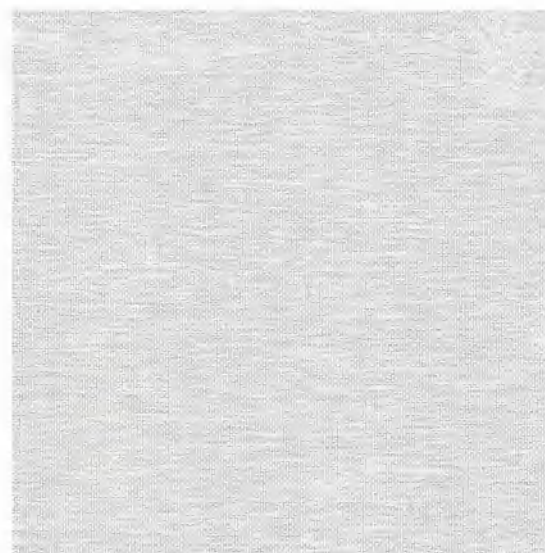
SX4204



SX4205



SX4206

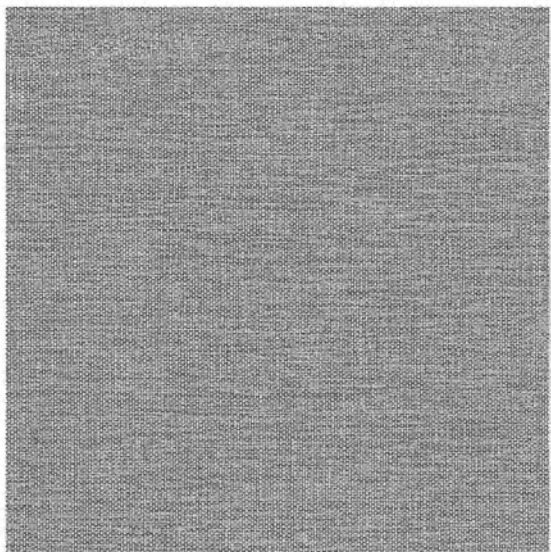


SX4207

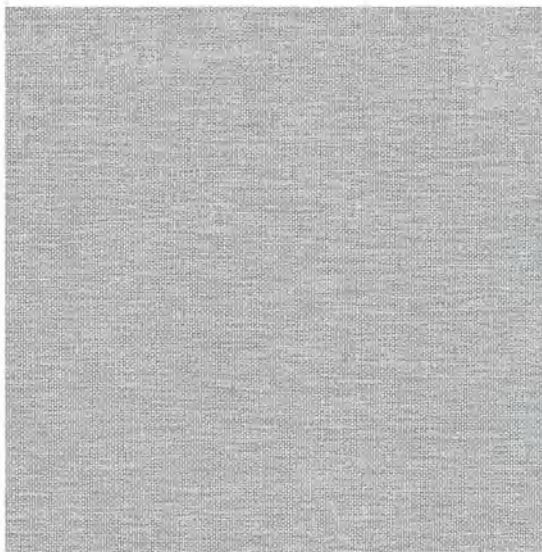




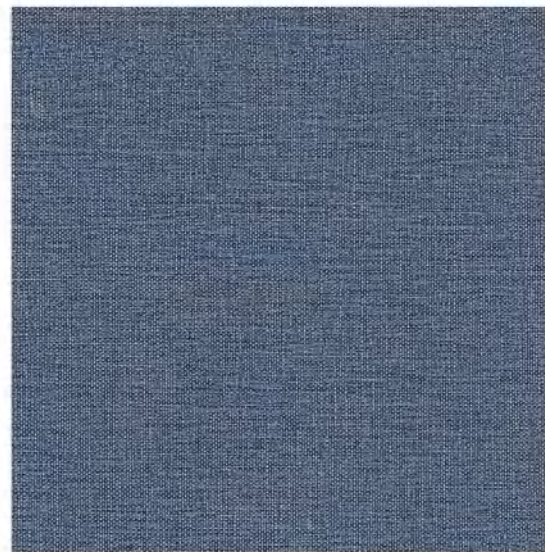




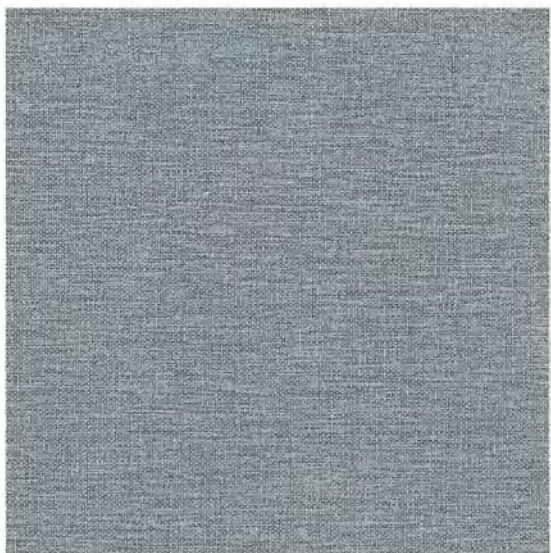
SX4208



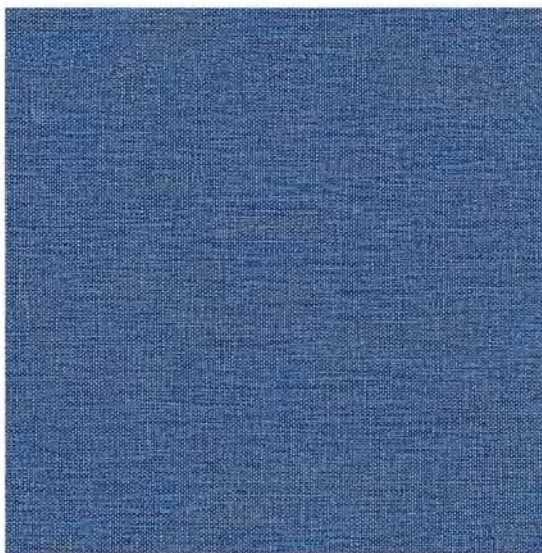
SX4209



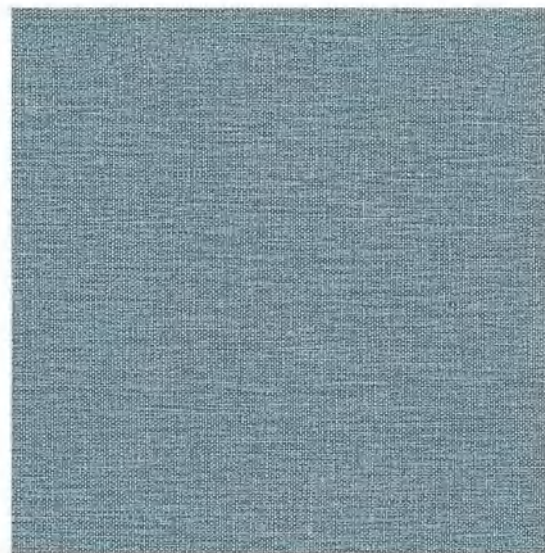
SX4210



SX4211



SX4212

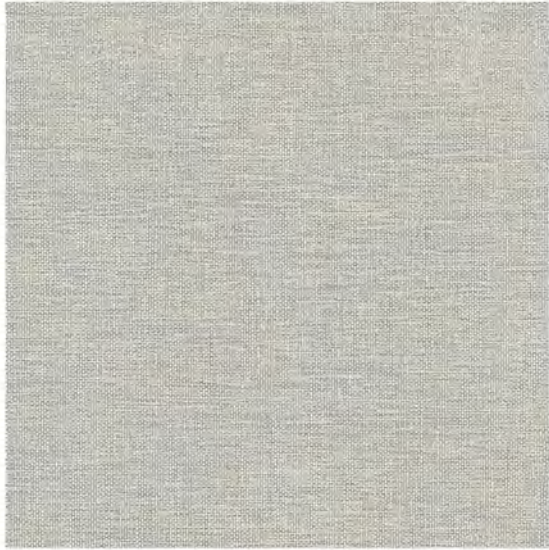


SX4213

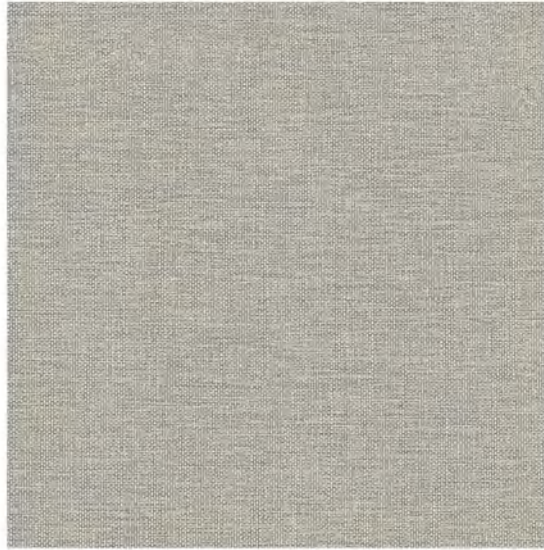




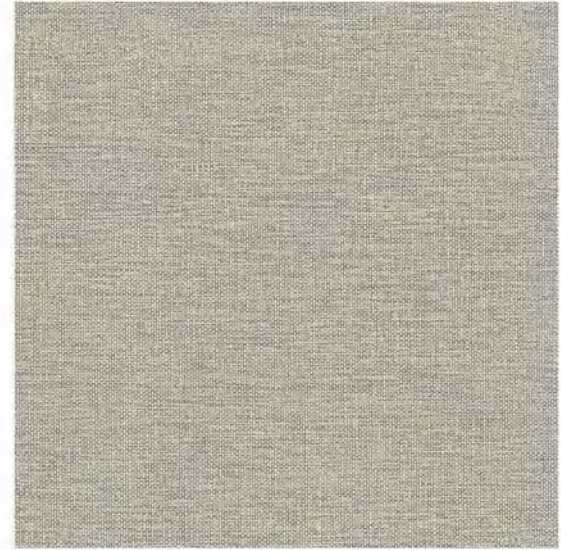




SX4214



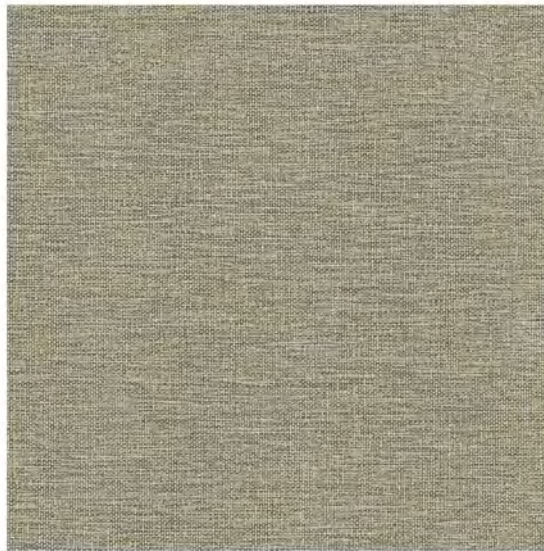
SX4215



SX4216



SX4217



SX4218



SX4219

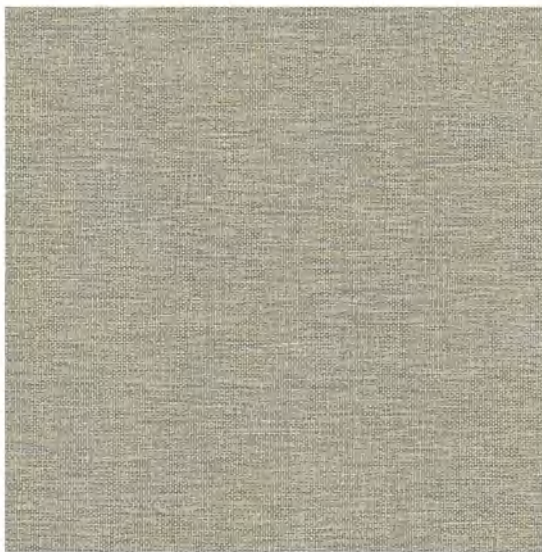








SX4220



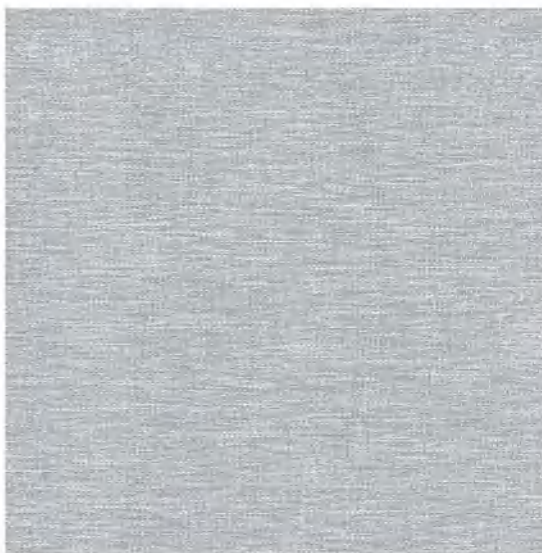
SX4221



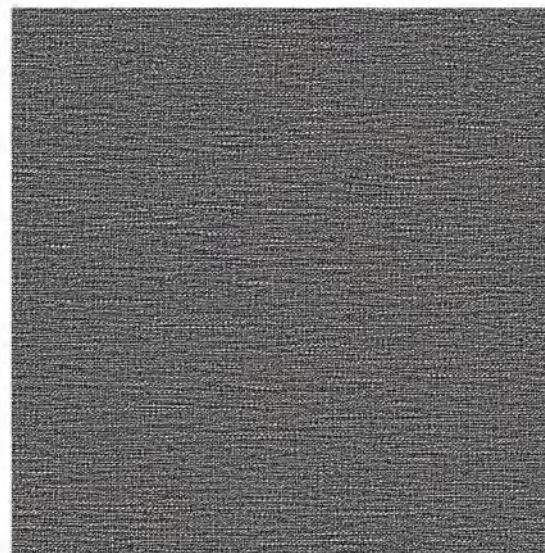
SX4222



SX4223



SX4227

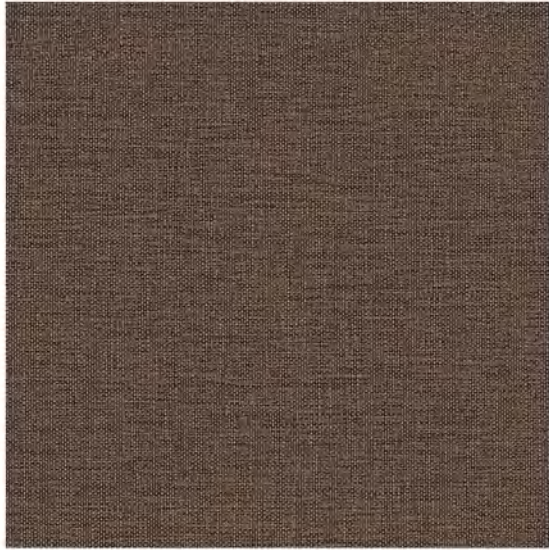


SX4227

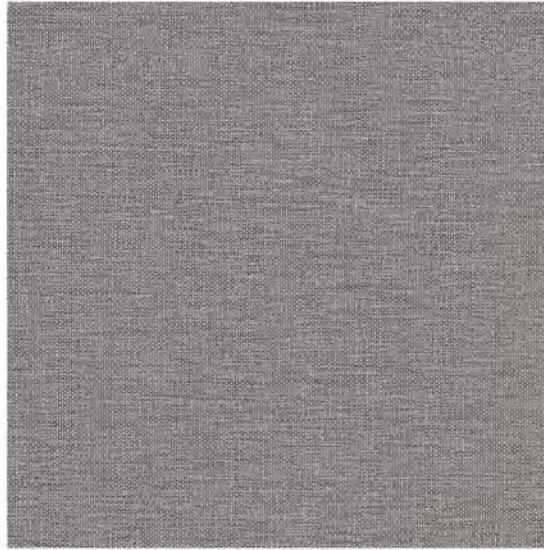




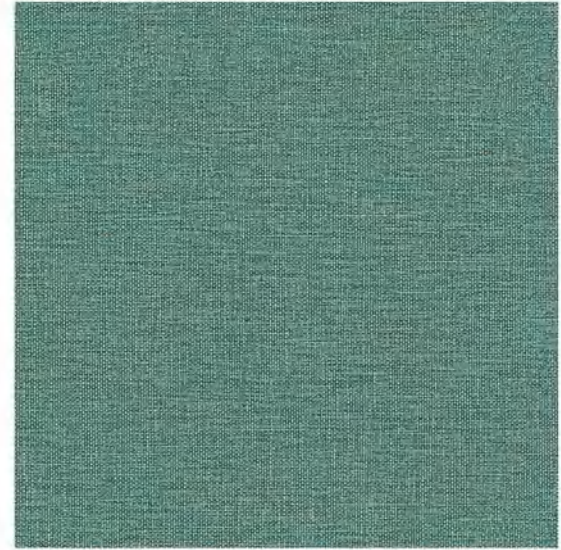




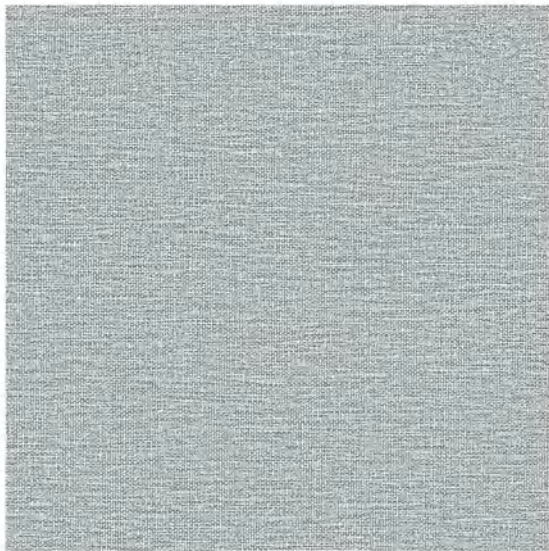
SX4232



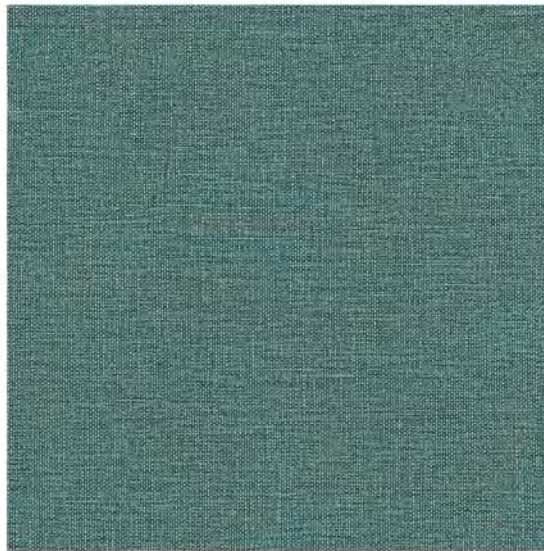
SX4233



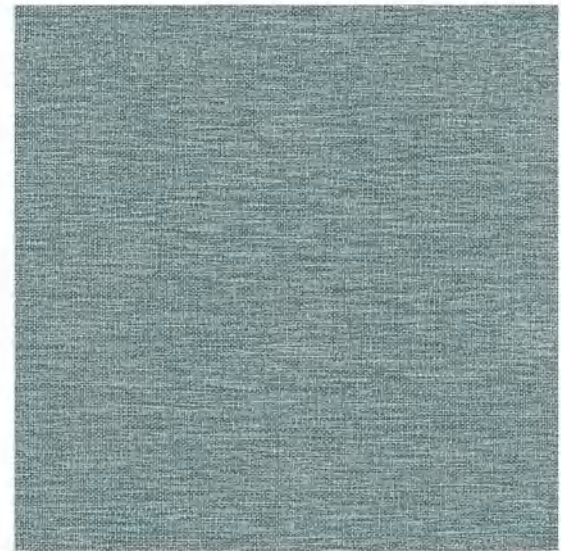
SX4234



SX4235



SX4236



SX4237