



SHAOXING SINAI TEXTILE CO., LTD





- Our factory is located in Yangxunqiao Town Industrial Zone, Shaoxing City which is a State social Multi-purpose Zone, close to Hangning Expressway. It is only 10km away from Hangzhou Xiaoshan International Airport.
- Our clients are more than 20 countries around the world, like Japan, Korea, the USA, the Europe countries, the south American, the middle-east countries.





- We have been doing both lace fabric and ready-made product like lace curtain, kitchen curtain, string curtain, table cloth and table runner for more than 20 years. We get 24 machines and 75 workers.
- Our factory cover an area of 30 thousand m² ,all 5 floors. We have weaving department, sewing department, packing department and business department.





Weaving Area



Sewing Area





Packing Area



Warehouse





Sample Room

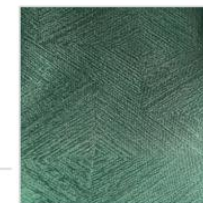


READ-MADE CURTAIN





Suede Fabric Curtain



Jacquard Fabric
Curtain



Printed Curtain



Terylene Voile
Curtain





Embroidered Curtain





Sheer Curtain



SHORT CURTAIN



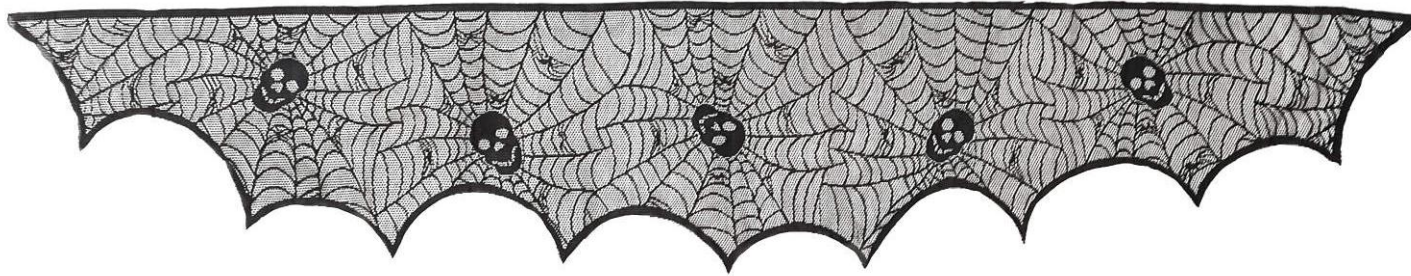
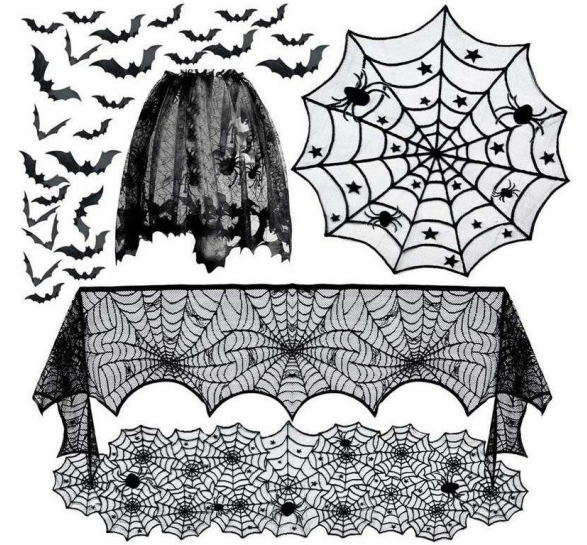
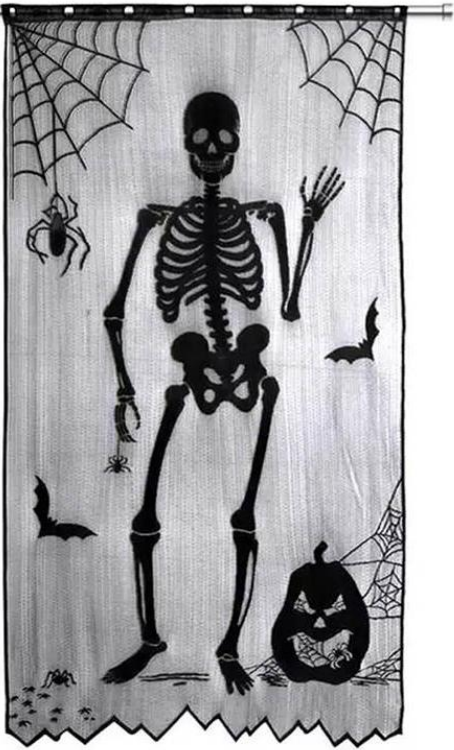
LACE FABRIC



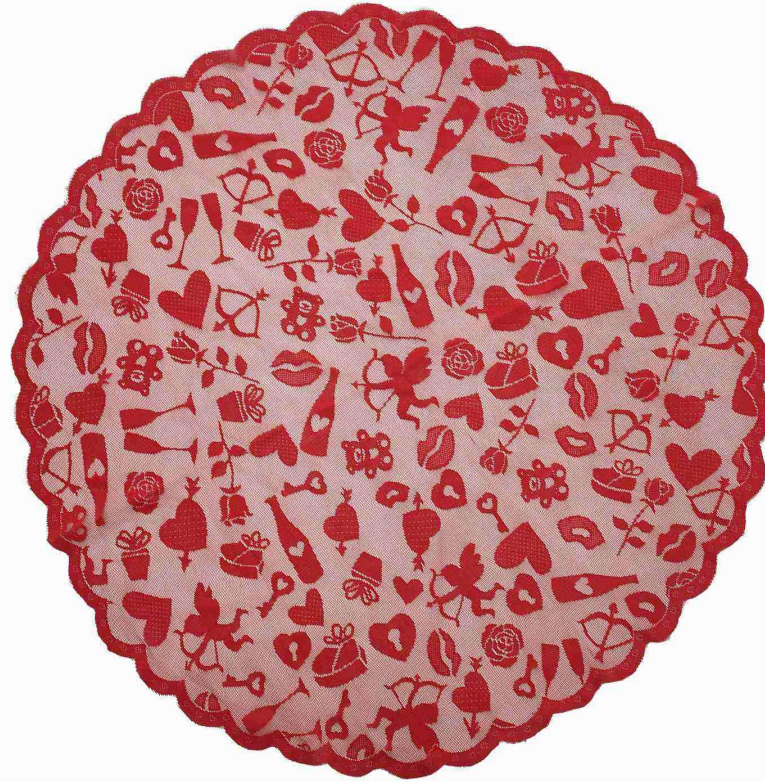
TABLE CLOTH



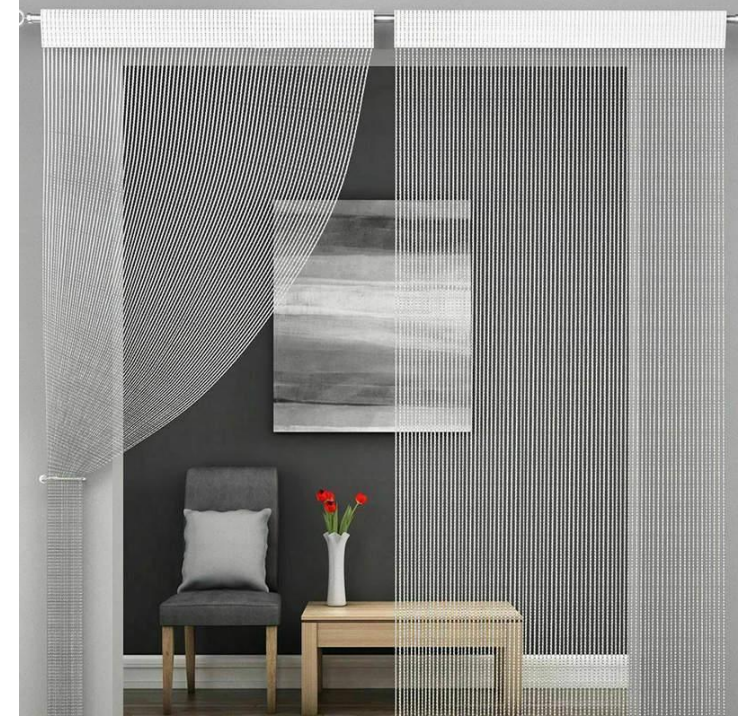
HALLOWEEN HOME TEXTILE



VALENTINE HOME TEXTILE



STRING CURTAIN



THANK YOU

