



# PRODUCT

## ROLLER BLIND



**Roller blind** is the most well-known among all ranges of window coverings. It's very easy adding different styles to inter decoration. It provides an excellent solution for preventing sun light from entering a room. It uses a variety of control systems such as chain control, spring control, wand control and motorized, etc. Different materials and patterns of fabrics are available for roller blind depends on consumers demand. You can even add fascia or valance box to cover the mechanisms to create an elegant appearance.

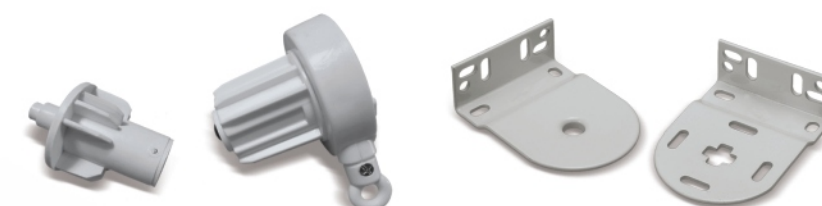
### ※ Various roller blind fabric for your choice

Size: 180cm / 200cm / 250cm / 300cm W.

Type: Textile, PVC laminated blackout fabric, Sunscreen fabric, Jute & Paper fabric, Zebra fabric, Shangri-la fabric.

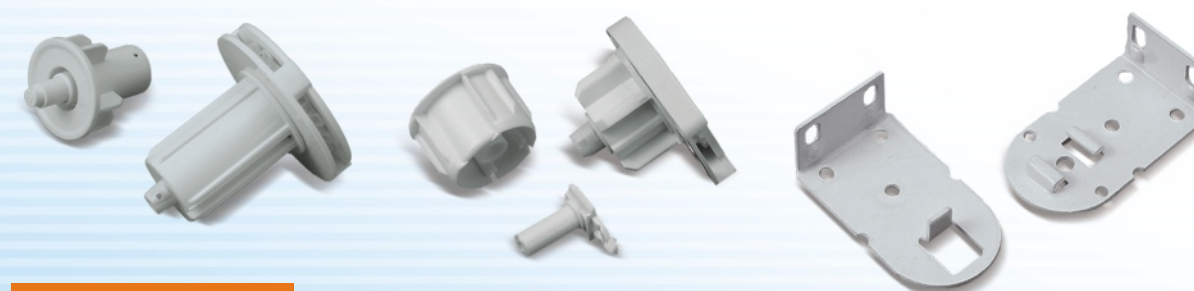


- ♦ Chain control, spring control, wand control, or motorized system.
- ♦ Vast choice of fabrics and openness: Sunscreen, Blackout, Semi-Opaque, Sheer, Shangri-la, Zebra, Paper & Jute, etc.
- ♦ For cover the Alum. tubes and top tracks, we have various cassette fascia / valance box systems for your choice.
- ♦ Also have 17mm mini size multi-stop spring roller system for smaller window.



### Wand control

Systems	Features	For Alum. tube dia.
RC-01 system	Child safety, Indoor crank system	38mm

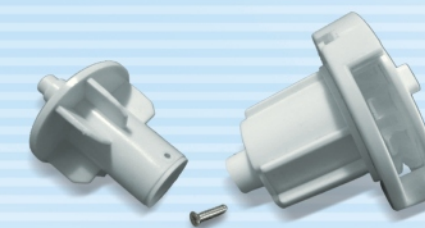


### Chain control

Systems	Features	For Alum. tube dia.
RT system	Economic type, plastic bracket for 25mm / 28mm roller blind	25mm, 28mm, 32mm, 38mm, 40mm
RU system	Gear reduction available, smooth and light while pulling up	32mm, 38mm, 43mm, 45mm, 50mm, 55mm
RP system	Wide-open control set	38mm, 45mm
RS system	Heavy duty up to loading weight 18kgs, easy to assemble the chain	38mm, 45mm

### Gear reduction design for chain control set

- ♦ Pull up by less strength
- ♦ Easy lift-up
- ♦ For heavy-duty blind up to 13 kgs
- ♦ No need to add assist spring







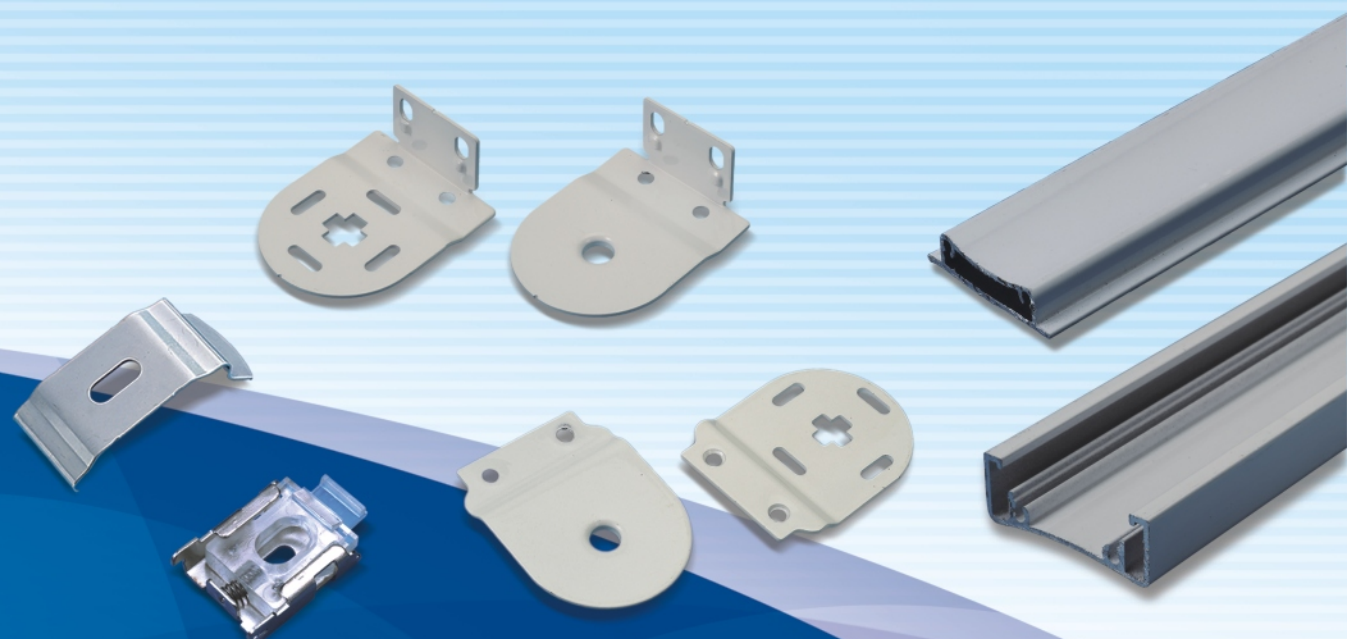
# PRODUCT

## ROLLER BLIND

### Roller blind with top track

Type	Systems	Features	For Alum. tube dia.
Spring roller blind	RH system	Slow-up spring roller blind	17mm, 28mm, 32mm, 38mm
	RH-01A system	Top/Down spring double roller blind	28mm, 32mm
	RH-01B system	Front/Back spring double roller blind	28mm, 32mm
	RK system	One touch roller blind, bracket cover available	32mm
Chain roller blind	RT system	Economic type, bracket cover available	28mm, 32mm, 38mm, 40mm
	RU system	Smooth and light while pulling up	32mm, 38mm, 45mm, 50mm
	RS system	Heavy duty up to loading weight 18kgs, easy to assemble the chain	38mm, 45mm
	RK-32C system	Chain + assist spring system	32mm

**Roller blind** is a classic choice for window dressing. There are many variations for this style of blind. And roller blind with top track is easily installed; customers don't need to measure the distance of side bracket to install the blind.

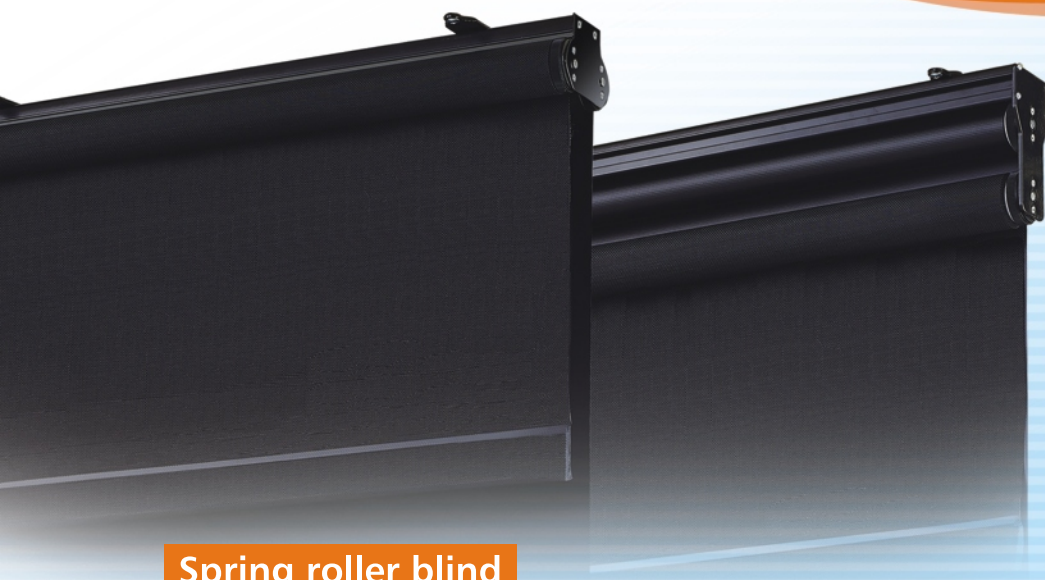






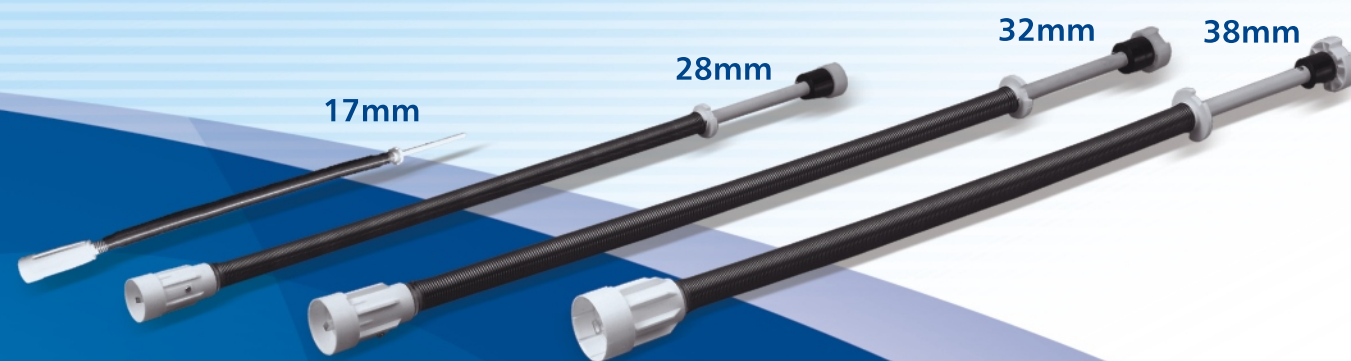
# PRODUCT

## ROLLER BLIND

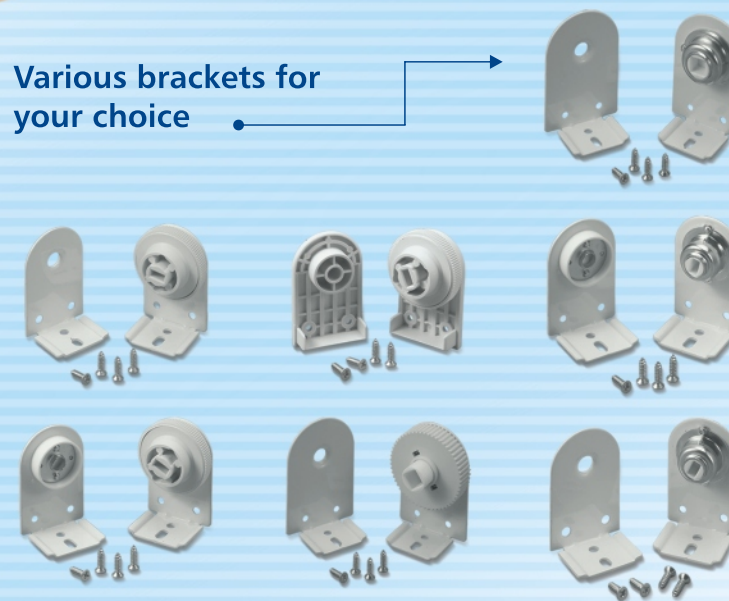


### Spring roller blind

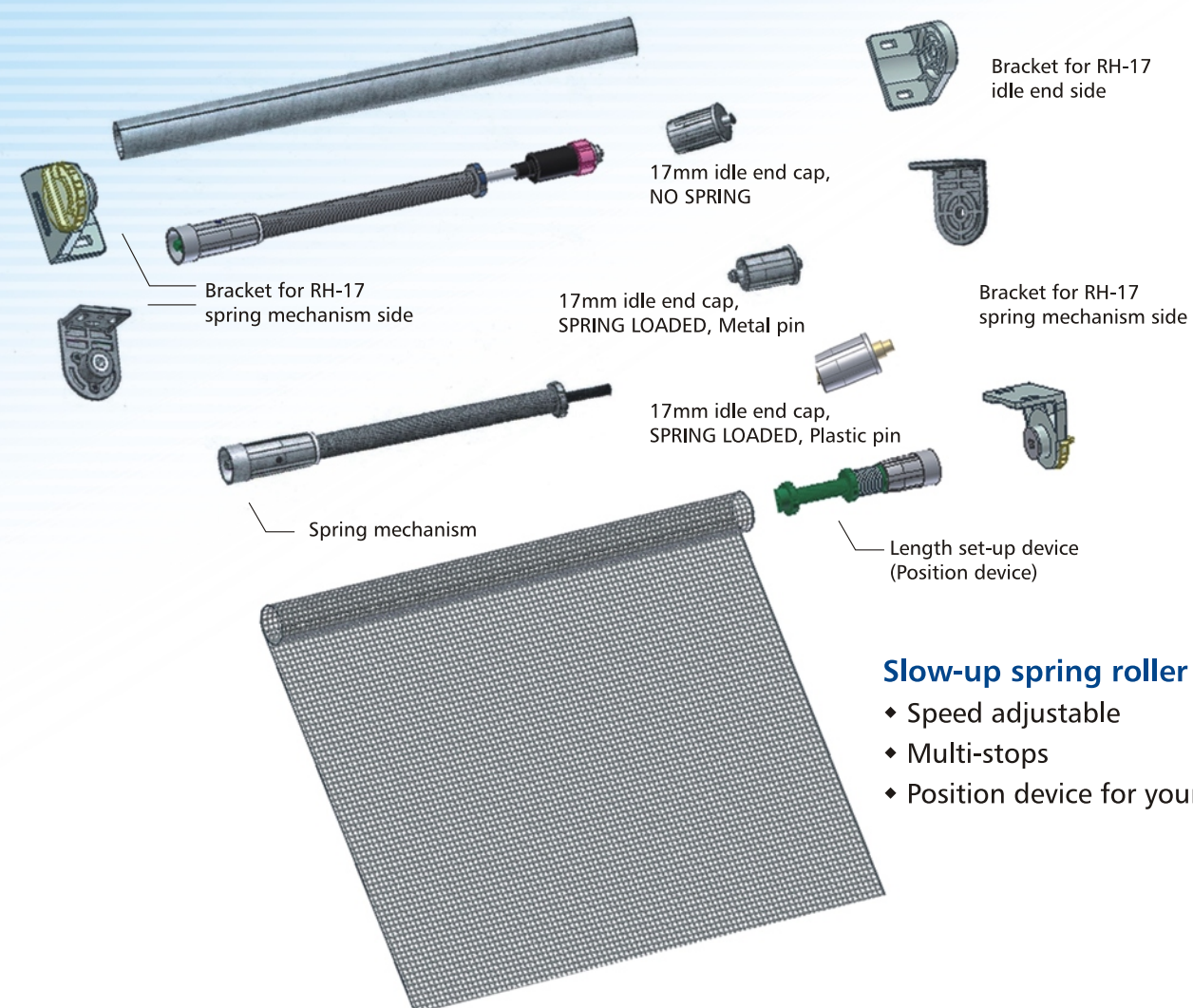
Systems	Features	For Alum. tube dia.
RH system	With hydraulic device for slow-up (speed reduction), multi-stops	17mm, 28mm, 32mm, 38mm
RH-01A system	With hydraulic device for slow-up (speed reduction), multi-stops, <b>Top &amp; Down Double shade</b>	28mm, 32mm
RH-01B system	With hydraulic device for slow-up (speed reduction), multi-stops, <b>Front &amp; Back Double shade</b>	28mm, 32mm
RK system	Chain + Spring, multi-stop (one-touch spring + brake)	32mm



Various brackets for your choice



RK-32 system  
32mm one touch roller blind parts



### Slow-up spring roller blind

- ♦ Speed adjustable
- ♦ Multi-stops
- ♦ Position device for your option





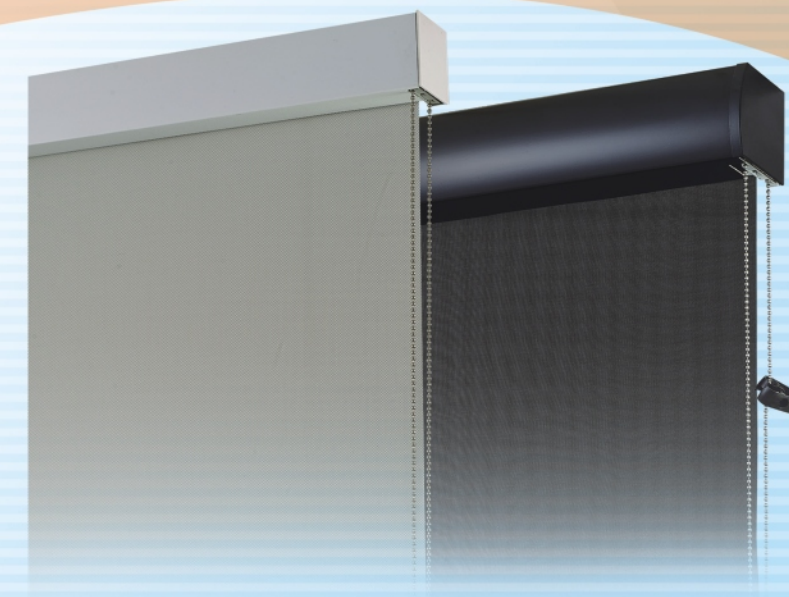
# PRODUCT

## ROLLER BLIND

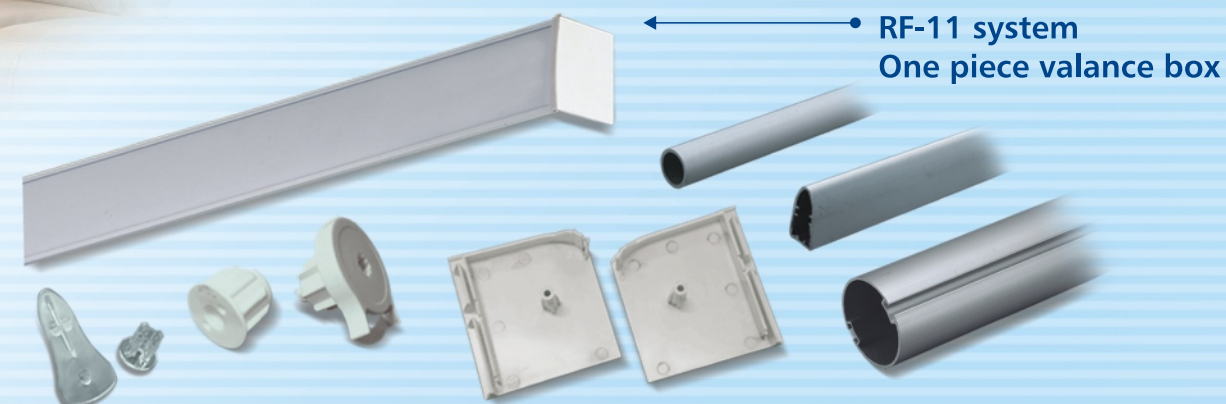


Roller blind with valance box

Systems	Features	Available Fabrics
RF-01 system	3" Square fascia, size 57 × 77mm	Regular roller fabrics
RF-02 system	3" Curved fascia, size 60 × 70mm	Regular roller fabrics
RF-03 system	Two pieces type, size 75 × 83mm, available for spring system	Regular roller fabrics, Shangri-la, Zebra fabrics
RF-04 system	Simple design	Zebra fabrics
RF-07 system	4" Square fascia, size 70 × 102mm	Regular roller fabrics
RF-08 system	4" Curved fascia, size 75 × 105mm	Regular roller fabrics
RF-10 system	One piece type, size 76 × 74mm	Regular roller fabrics, Shangri-la, Zebra fabrics
RF-11 system	One piece type with groove to insert vanes, size 70 × 74mm	Regular roller fabrics, Shangri-la, Zebra fabrics
RF-32 system	Two pieces type, size 76 × 95mm	Regular roller fabrics, Shangri-la, Zebra fabrics



Square and curved valance box for regular roller blind



RF-11 system  
One piece valance box



RF-03 system  
Valance box cover in two pieces





# PRODUCT

## SIDE GUIDE



Spring roller blind  
with side guide



Chain roller blind  
with side guide

J&J  
STAMINA



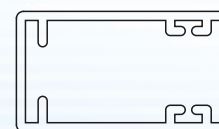
### Side guide system

With aluminum side channels which guide the bottom rail to make it slide smoothly.

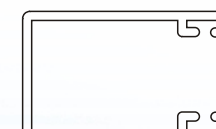
1. To avoid the light filter
2. To cover the gap
3. With hairy strip to reduce the noise



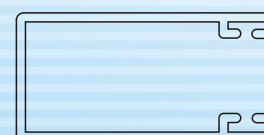
Alum. side guide, 40mm L. × 22mm W.



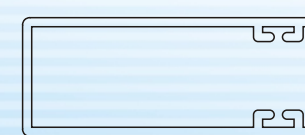
Alum. side guide, 40 mm L. × 23.5 mm W.



Alum. side guide, 50 mm L. × 23.5 mm W.

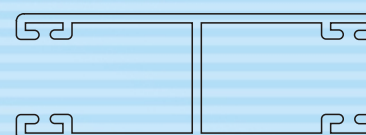


Alum. side guide, 55.6mm L. × 21.6mm W.



### ※ "H" type side guide to connect two blinds

Alum. side guide, 70 mm L. × 23.5 mm W.







# PRODUCT

## FRAME SHADE



### Single shade

with one blackout fabric

### Frame shade system

Fabric can glide along the grooves of plastic side frame, and the positioning hole inside the grooves can fix the fabric at desired height.

It is compact style of window covering, and suitable for small size.



### One Top and One Bottom

with one blackout fabric  
+  
one sheer fabric



### Double Top

with one layer blackout fabric  
+  
one layer sheer fabric







# PRODUCT

## CHILD SAFETY

J&J  
STAMINA

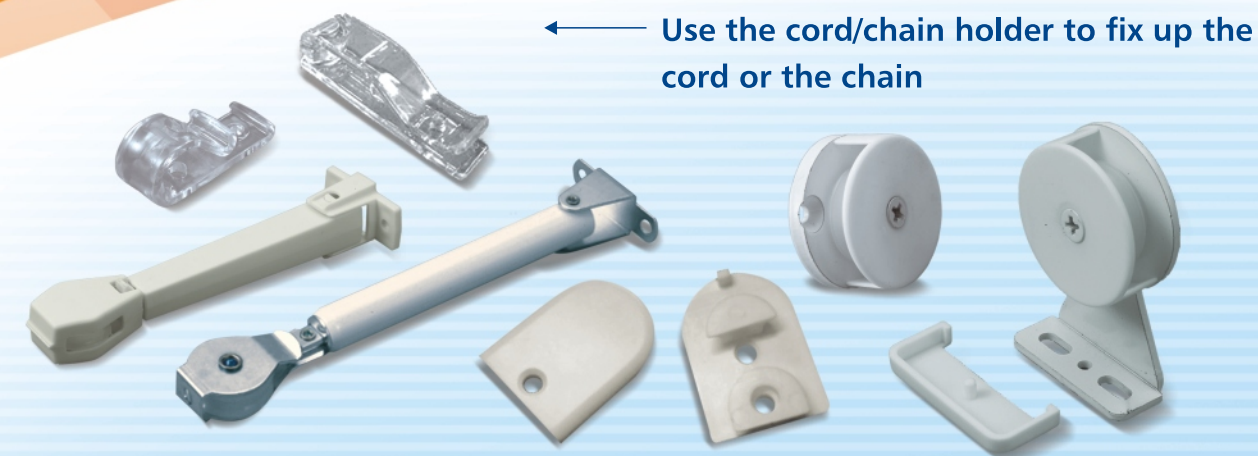
Selected ideal child safety devices like chain holders and chain connectors which are able to fix up the chain or cord and prevent children from tripping or strangling.

To ensure your window blinds are child safe, we have the following solution for your check.

Use the chain break connector for the chain, the loop chain will break apart under undue pressure.



Use the safety tassel for the cord, the loop cord will break apart under undue pressure.



← Use the cord/chain holder to fix up the cord or the chain

Use the cleat to fix the cord →

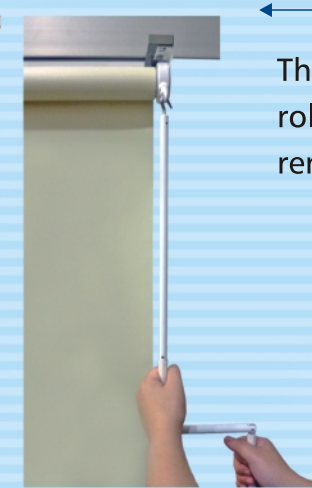


← By Cordless/Chainless System:

The design of crank roller blind system, spring roller blind, wand control vertical blind, remove the need for operating chain or cord.



Wand control vertical blind



Crank roller blind



Spring roller blind

By Safety Devices for Roman blind →

- ♦ Automatically loosened: Once the loading weight is heavier than 3kgs, the device will be loosened automatically to remove hazardous loop
- ♦ Rapid re-installation function: After loosened, the clip is easy to reassemble to save time
- ♦ Anti-UV treatment: Since the item is set at the back of Roman blind, it would be exposed under UV for long time. It has the Anti-UV treatment to extend the availability.

