



ADAMJEE TEXTILE MILLS (PVT) LTD

## INTRODUCTION TO ADAMJEE WEAVING MILLS

*Weaving dreams into reality*



[www.adamjeetextile.com](http://www.adamjeetextile.com)  
[www.adamjee.com.pk](http://www.adamjee.com.pk)

## OUR MISSION

To fully understand and gratify Client's requirement for Quality & Service, through effective human resource training while maintaining our commitment to sustainable environment policies & social compliance.

## ABOUT ADAMJEE ENTERPRISES

We are proud of our humble beginnings. The journey from a trading house to a composite textile processing unit has been a uniquely challenging and rewarding experience that has spanned three generations of passion & dedication.

Customer retention has been our core strength and pivotal component of our strategy, we are proud to have long standing association and satisfied customers from diverse Industry background in over 30 countries. We cover wide range of product for Home Textiles, Quilters and Pillow producers, Converters & Importers and for Hotel and Health Care sector.

## INTRODUCTION TO ADAMJEE WEAVING MILLS

We are delighted to share details of our new Air jet Weaving Project at our existing weaving plant at Nooriabad. We are committed to expansion and apply latest and modern technology into our production. For this project, we have committed to investment US\$ 25 million, creating 350 new jobs.

This is the most advanced project in terms of loom speed vs energy consumption. We have a Self-Generation Power plant based on highly efficient Natural Gas Engines (2 x 1.5MW) with Co-Generation System. The overall efficiency of energy use in co-generation up to 80 – 85% (44% Electrical & 41% Thermal). Along with the saving of fossil fuels, co-generation also allows to reduce the emission of Greenhouse gases (particularly CO<sub>2</sub>) and other air pollutants emission. We are also planning to install 1MW Solar power plant in our system considering the Green building concept.

Our Electrical Distribution network designed on Busbar Trunking System instead of Cables considering most efficient, safe and environment friendly. All Internal & External Illumination design based on LED and considering the LEEDs standard of highly efficient lamps output up to 160 Lm/W (Lumens per Watt).

This project is in 2 phases of 72 looms each with a total of 144 looms. This will give Adamjee Textile additional 1.50 million meters of monthly production based on single width, however on mix of single and double width we expect average of 2 million meters of additional monthly production.

## LOOM SIZE & FABRIC WIDTH

- 220cm x 06 Max 81" based on single width. (205cm) RPM 1100
- 280cm x 30 Max 52" x 2 width or single width 106" (132cm / 269cm) RPM 900
- 340cm x 96 Max 63" x 2 width or single width 128" (160cm / 325cm) RPM 850
- 360cm x 12 Max 67" x 2 width or single width 134" (170cm / 340cm) RPM 700

The diverse width selection of the loom size will give us immense flexibility of Fabric Width and Industry selection, from 48" to 134" (120cm to 340cm) This will give us production for narrow width for Garment including Lycra® and for Bedding of all sizes including Cal King for USA Market.

**We are expecting to start deliveries from our 1st Phase from July/Aug, 2022.**

## LOOMS

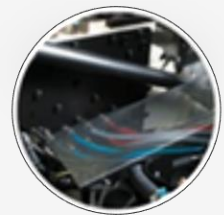
Weaving shed is equipped with world's most advanced, high speed and energy efficient "Picanol Omni plus-i looms.

ADAMJEE believes in technology and for that we have installed latest machines to enhance weaving capabilities through sustainable, smart and intuitive control Picanol machines.



## LOOM FEATURES

- **High Speed Weaving**
- **More Insertion Time**
- **Complex Weft Insertions**
- **High Cover Fabrics**
- **Smart Weaving**
- **Flexible Weaving**



## WARPING MACHINE



Best warp preparation always means a higher weaving production. It is believed that a “well sized is half woven”. ADAMJEE understand the vital role of sizing to the process of weaving and therefore installed world’s best warping and sizing machines to their system. We have two Direct beaming machines with creel capacity 1040 and 1170 to accomodate maximum warp ends..

The sizing machine is equipped with 20 cylinders with BMD head for maximum speed of 160 m/min having 32 beams creel for high end constructions.



## WARP DIRECT BEAMING MACHINE

Karl Mayer direct warp beaming machines meet highest demands on the manufacture of top – quality warp beams for weaving. The “WD”, warp direct, warping unit produces the best quality warp beams for dress shirt fabric, bedding, denim and cleaning textiles at higher production speed up to 1200 m/min.

The intelligence press roll system with optimal yarn depositing device meaning completely cylindrical warp beams with precise yarn arrangement and same warp length for all beams.

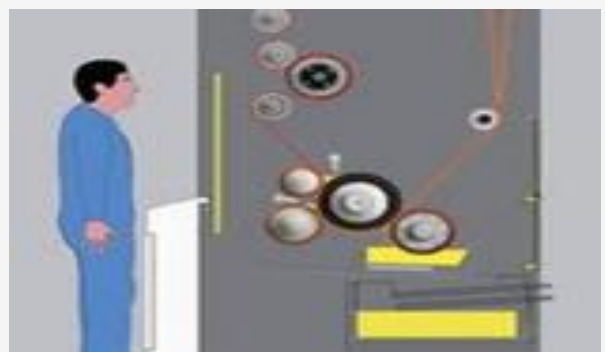
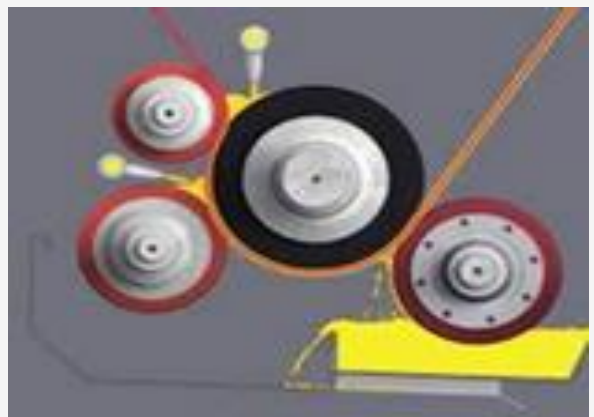


## PRO-SIZE SIZING MACHINE

An Innovative Breakthrough in Sizing , the Karl-Mayer’s Patent size application system with no – immersion unit, equipped with three highly turbulent and uniform application zones with spray bar technology for smooth size liquor application.

The short wet – application zone for 100% bonded yarn transport and soft – dry system ensure lowest yarn elongation in sizing process. This allow us to minimize yarn breakage during sizing and more finer counts up to 120/s can be sized easily.

Top weaving performance through absolute size liquor homogeneity, low hairiness, less dust and no stop marks. The single-drive motor system for minimum yarn stretch assure equal distribution of the yarn tension between cylinders, avoiding friction for better yarn preparation.

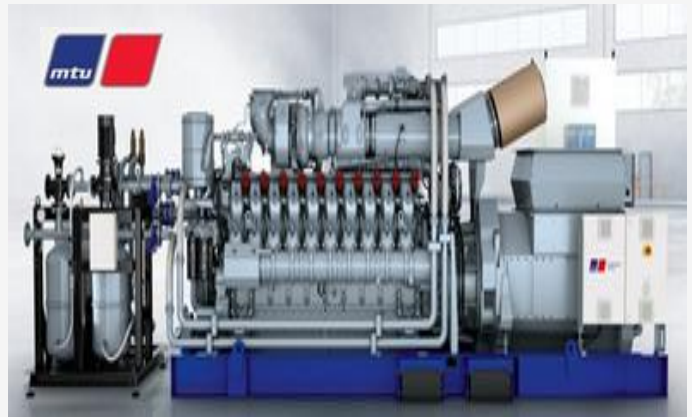




## POWER GENERATION

The New natural gas Genset offers the highest power density 130 Kwh / Cylinder and highest Kilowatt-per-Square-foot ratio in its Class. Optimized for Hot and Humid environments with no deration up to 45°C. Its smaller footprint enables a 30% improvement in power density compared to its predecessor. Superb performance at high temperature and high humidity achieving electrical efficiencies of up to 44.4% delivering a significant improvement in fuel/energy utilization at high temperature.

Generator is the Heart of the System, MTU boasts low emissions and high efficiency to keep the Weaving Process supplied with electrical power, heat and cooling.



## COMPRESSED AIR

An innovative technology, ATLAS CAPCO ZH Series Compressors captures years of experience in advanced compressed air solutions to supply Oil-free air in multiple environments.

The optimum combination of a high-flow with low energy consumption, driving down energy costs, Atlas Capco assure you peace of mind by keeping your production up and running.

ZH-800 producing clean, dry, high quality air (Class O) with optimal efficiency, low air approach temperature and pressure drop.

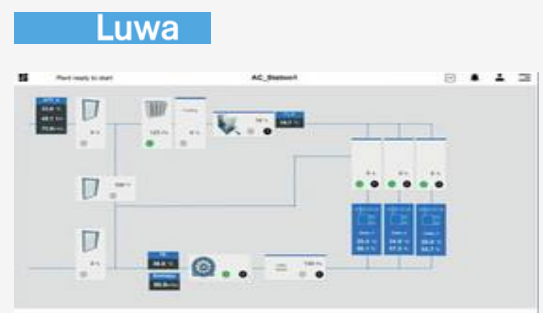
The reliable servo-motor based actuator for accurate alignment with variable air demand thus eliminating costly blow-off in all operating conditions by combination of Turbo and screw technologies.



## HUMIDIFICATION PLANT

In Textile manufacturing process, many factors influence the productivity and quality of yarn. The main task of air conditioning and filtration systems is to keep these factors under control to achieve maximum production. LUWA digi-7 provides constant Relative humidity at all times with a controlled even temperature profile, Energy use, Air balance in all production areas and elimination of influence from outside air.

The ideal regulation of textile production space is achieved by a harmonized interaction of mechanical air moving equipment, digital control and precise sensors. Digi - Control 7 delivers this harmony using Humidity Temperature Transmitter HTT, Temperature Transmitter TT, and Differential Pressure Transmitter GPGS type Sensors.





## CONTACT US

### **Mills / Head Office**

Adamjee Enterprises. E-17/A, S.I.T.E, Karachi, Pakistan

### **Weaving - Airjet / Sulzer**

Adamjee Enterprises. A-235, SITE, Nooriabad, Karachi Pakistan.

+92 21 38658926

[info@adamjeetextile.com](mailto:info@adamjeetextile.com)

[www.adamjeetextile.com](http://www.adamjeetextile.com)