



NOMAN TERRY VISION



Vision

To create sustainable manufacturing excellence in textile realm and pursue loyal customer and people

Values

- 👑 Green Planet
- 👑 Safe and Secure life
- 👑 Market Leadership
- 👑 Cost consciousness
- 👑 Customer Centric
- 👑 Create example

AT a GLANCE



- Established: 2012
- Located in Gazipur, Dhaka
- Industry: Home Textile
- Start Business : 2012
- Total employees : 6500
- Layout: 120 Thousands SQM (land)
- 200 KW Solar Panel
- No coal and Diesel for power generation
- Hot water recovery
- Condense recovery
- Rain-water harvesting
- Recycle cotton plant
- Recycle polythene plant

CAPACITY

Vertical integrated set-up

500 MT/day Yarn Spinning

Own Cotton Recycle Facility

80 MT/day Terry Product

25 MT/day Yarn Dyeing

2nd Largest accessories unit

Own Transport FOB



PRODUCT RANGES



MATERIAL CAPABILITY





STRENGTHS

- Vertical integration with large compliant capacity
- Strong financial strength
- Modern manufacturing facility
- Versatile loom capacity (Dobby, Jacquard, Terry Motion)
- One stop solution for terry
- Duty free benefits

OPPORTUNITIES

- Yarn dyed and jacquard range
- Bed spread, bath mat, Kitchen and Bath robes
- Automation in process
- Circularity
- Innovate materials and technique
- Logistic cost development



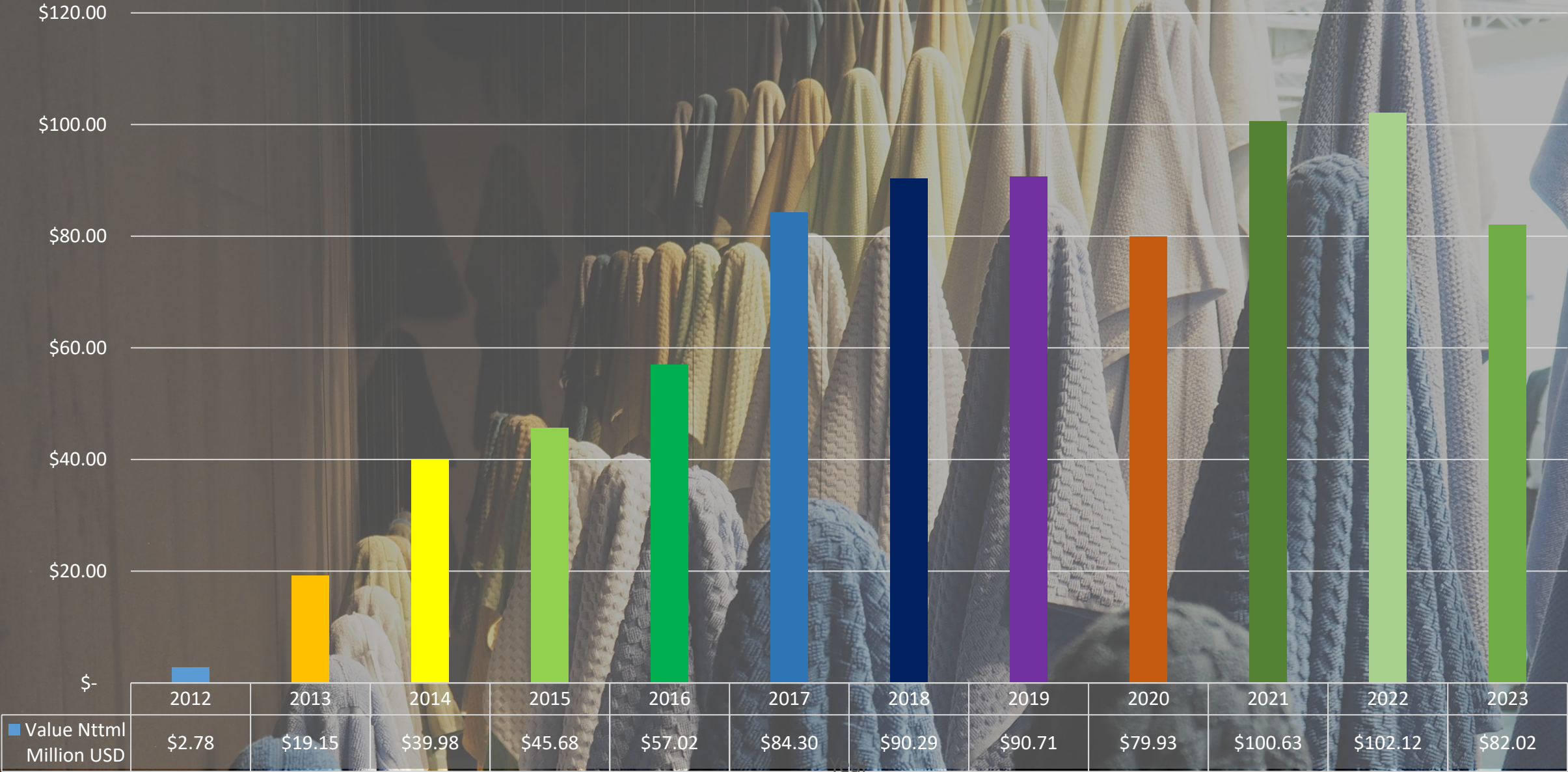
WEAKNESS

- Printed Terry
- Raw Material import Dependency

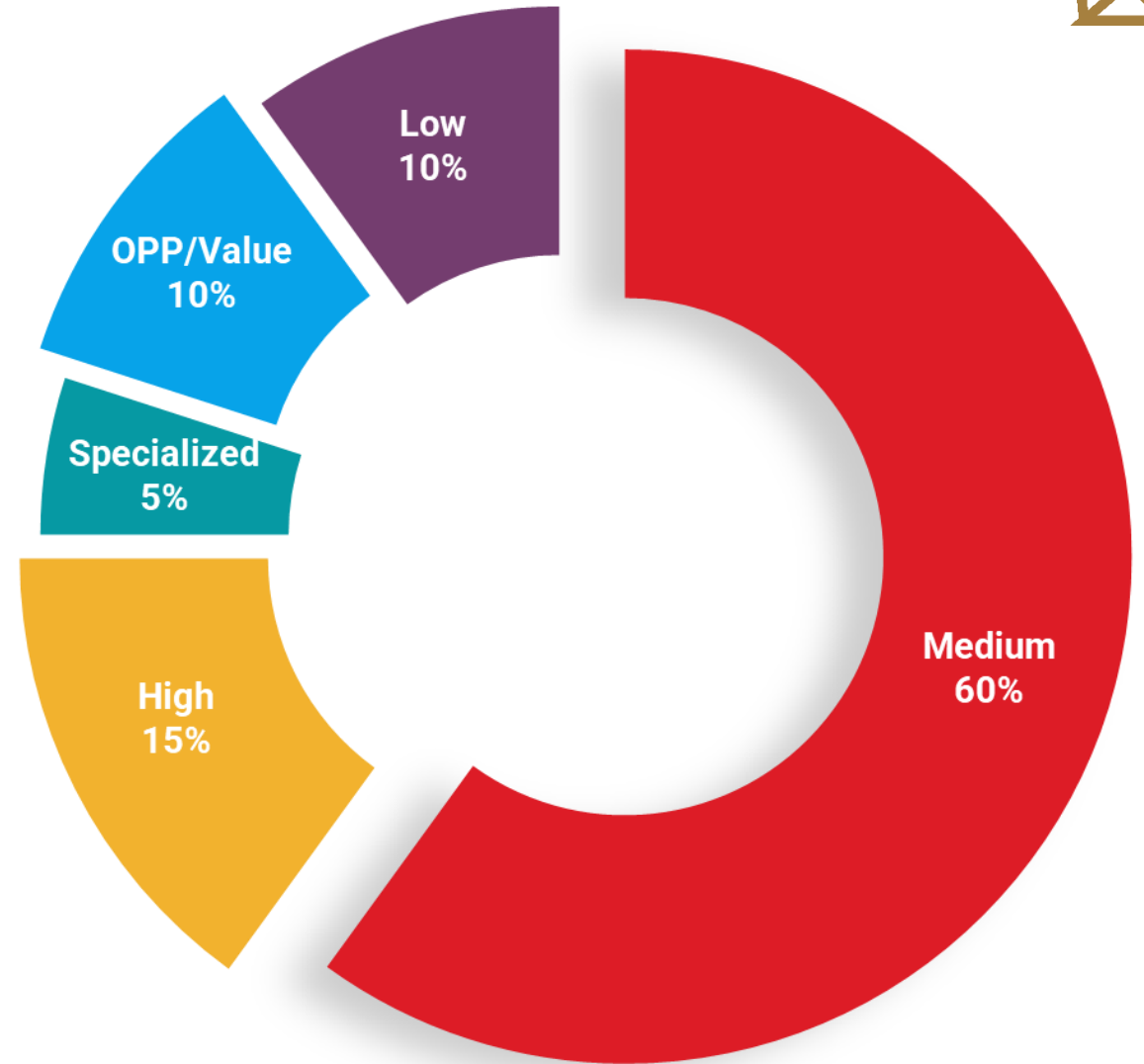
THREATS

- Cost increase – RM, labor, energy, chemical and paper material
- Transport disruption

BUSINESS HISTORY (Noman Terry)



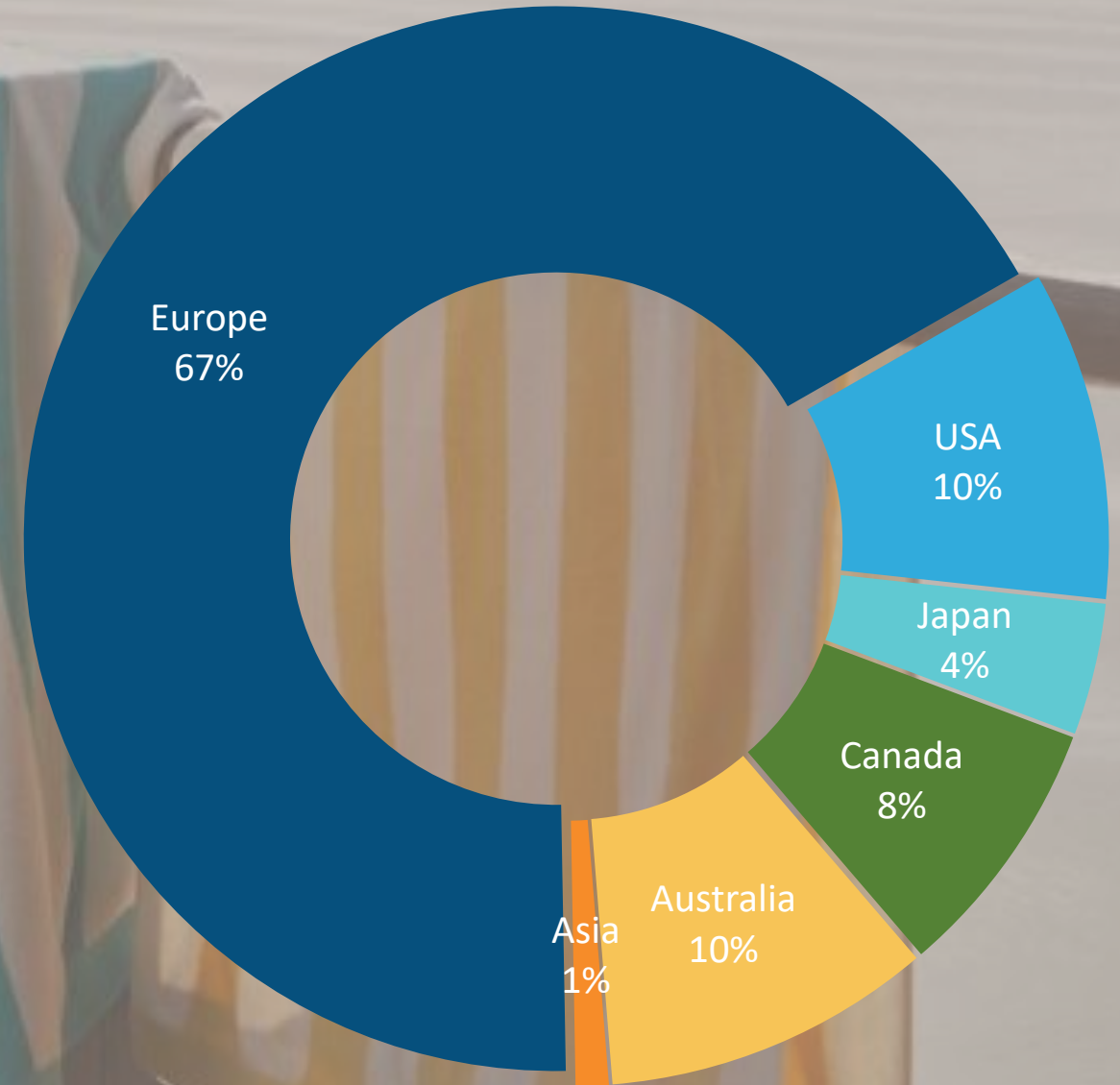
PRODUCT MIX (Based on Price ladder)



MARKET SHARE



- 👑 Europe market: IKEA, OTTO GROUP, H&M, DECATHLON, CARREFOUR, OVS, C&A, JYSK, LIDL, PRIMARK, ZEEMAN, RUSTA
- 👑 USA market: MY PILLOW, ROSS Stores, West Point, POLYCONCEPT
- 👑 USA market on development: TARGET, CARTERS,
- 👑 STANDARD TEXTILE, COSTCO,
- 👑 Japan market: ITOCHU, AEON, KOYO
- 👑 Canada: WALMART, DOPHES, EDEN Tex
- 👑 Australia: BIG W, TARGET, COTTONON
- 👑 Asia: CANADIAN, DIMARA, INDIGO



Noman Terry Offer

- ❏ Wide range of yarn 2 to 120
- ❏ Jacquard, Dobby, Yarn dyed, Up-down, Terry non-terry, Fringe, waffle

- ❏ Capacity flexibility
- ❏ Stable supply chain
- ❏ Quantity flexibility
- ❏ Lead time flexibility

- ❏ Vertical integration
- ❏ Large compliant capacity
- ❏ Own cotton recycle facility

- ❏ Automated confectioning
- ❏ GSP (EU, CANADA, AU)

- ❏ Long experience with leading retails
- ❏ No customer claim till date



Capacity Update



01

Startup

Nice Spinning Mills Limited

Started April 2023

Full Phase operation

August-2023

Jan-24 IKEA supply chain

Total investment: \$70M

02

Capability

Modern Automation

90000 Ring Spindle

2520 Open end head

Rings spun yarn

Open End yarn

Cellulosic blend

100 MT/day

Green compacting

03

Automation

Auto feeding

Auto doffing

Automated waste mgt

Auto traveler

Automated packing

04

Impact

Own Spinning

Stable supply chain

Better purchasing ability
of raw material

Cost reduction project
driven by NT

PEOPLE PLANET POSITIVE



SOCIAL

BSCI
WRAP
SEDEX
SMETA
ISO-9001
ISO-17025
ISO-28001
ISO-14001
CT-PAT

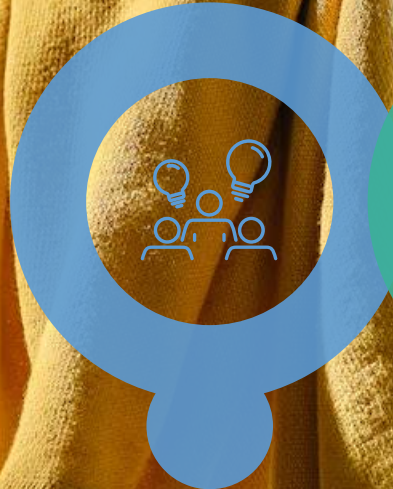
SUSTAINABILITY

GOTS
OEKOtex
GRS
HIGG
OEKOtex STEP
DETOX
V-label

MATERIAL

BCI
CMIA
AU COTTON
ORGANIC
LYOCELL
MODAL
VISCOSE
rCOT
rPET
rVISCOSE
BANANA
PINEAPPLE
COTTONIZED JUTE
Renewcell
Kapok

KEY FOCUS 2025



**Process
Optimization**



**10 MW
Renewable
Energy**



**30% Water
recycling**



**Continuous
cost out**



LET'S GROW TOGETHER

