

BADAVI

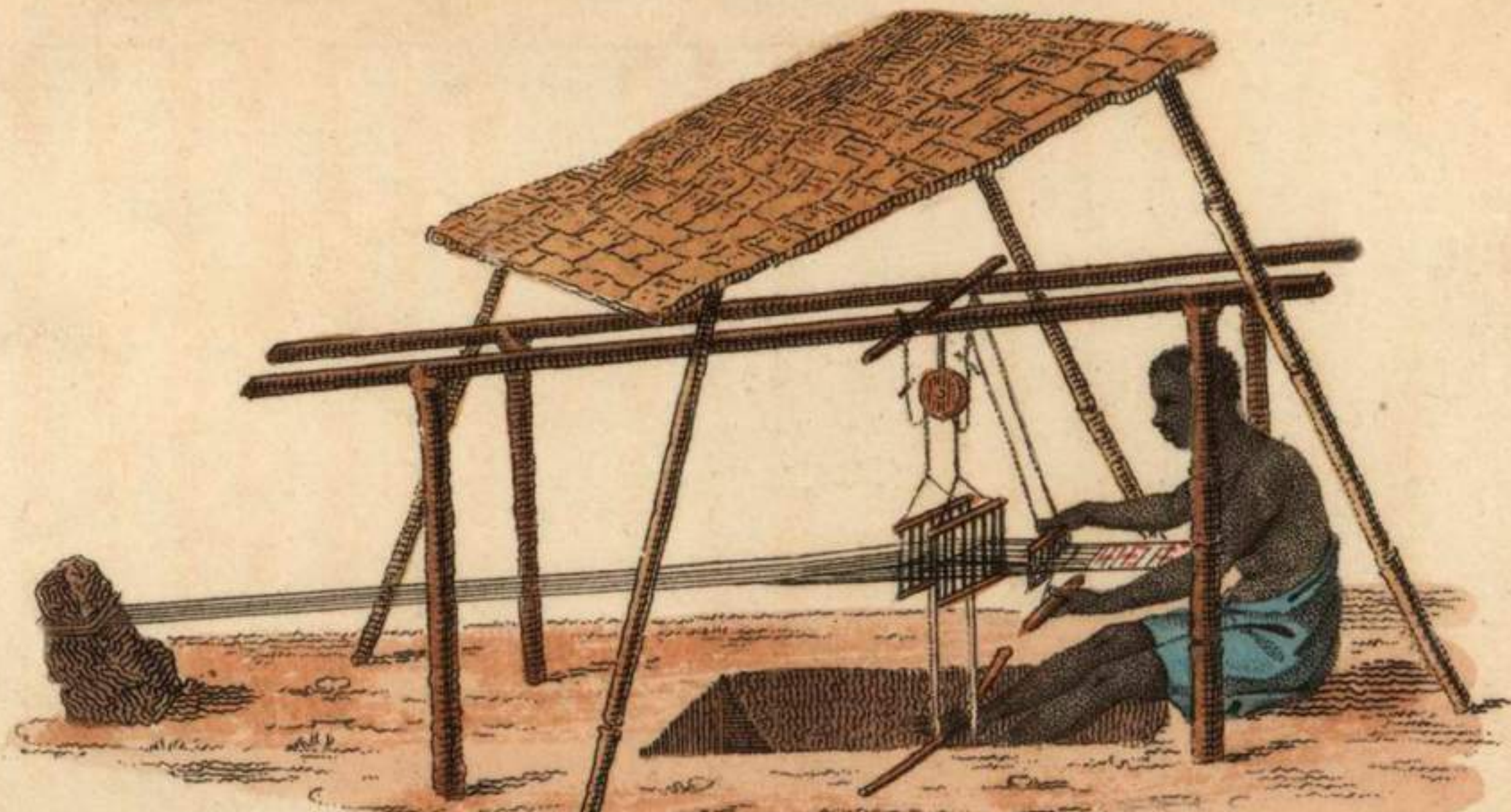
Beyond the Ordinary

Hafizla™



Pit Loom

At **Hafizia**, we believe in preserving the legacy of hand-woven rugs. A cornerstone of this tradition is a traditional hand-weaving loom: Pit loom, a remarkable tool that has been transforming yarn into functional art for centuries.



ADVANTAGES OF WOOL

Environmental Sustainability: Wool is a renewable resource, sourced ethically from sheep that graze freely on lush pastures. Its biodegradability ensures minimal environmental impact, aligning with eco-conscious lifestyles.

Health and Well-being: Hypoallergenic and resistant to dust mites, woolen yarn rugs contribute to healthier indoor environments, making them ideal for homes with sensitive occupants.

Versatility: From traditional motifs to contemporary designs, woolen yarn adapts effortlessly to diverse styles, offering endless possibilities for customization.

KEY FEATURES OF WOOL

Resilience to Crushing: Wool fibers bounce back naturally after being compressed, maintaining the rug's plush appearance and cushioning underfoot. This resilience makes woolen rugs ideal for high-traffic areas where durability and comfort are paramount.

Hypoallergenic Properties: Wool is hypoallergenic and resistant to dust mites, pollen, and mold, making it a healthy choice for allergy sufferers. Woolen rugs contribute to cleaner indoor air quality, promoting a healthier living environment for families.

Sound Absorption: Wool fibers naturally absorb sound, reducing echo and noise levels within rooms. This acoustic property creates quieter environments, making tightly woven heavy quality woolen rugs an excellent choice for homes where peace and tranquility are paramount.

Dyeability: Wool fibers readily accept dyes, allowing for vibrant and long-lasting color options that enhance the aesthetic appeal of woolen rugs.

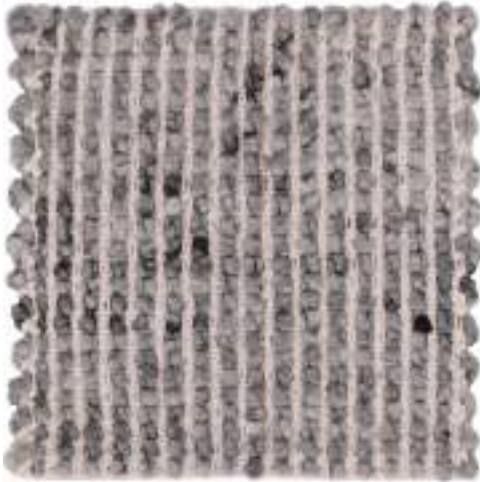
Versatility in Design: Wool's versatility allows for intricate patterns and vibrant colors in rug designs. Whether weaving traditional motifs or contemporary styles, woolen rugs showcase craftsmanship and artistic expression, enhancing the aesthetic appeal of any space.







GREY



SAND



REFERENCE	SIZE	COLOR	CONTENT
32602	160 X 230 CM	SAND	60% WOOL, 20% COTTON, 20% POLYESTER

REFERENCE	SIZE	CONTENT
32602	40 X 40 CM	60% WOOL, 20% COTTON, 20% POLYESTER





REFERENCE	SIZE	COLOR	CONTENT
32603	160 X 230 CM	CAMEL	50% COTTON, 35% WOOL, 15% POLYESTER

GREY



CAMEL



REFERENCE	SIZE	CONTENT
32603	40 X 40 CM	50% COTTON, 35% WOOL, 15% POLYESTER



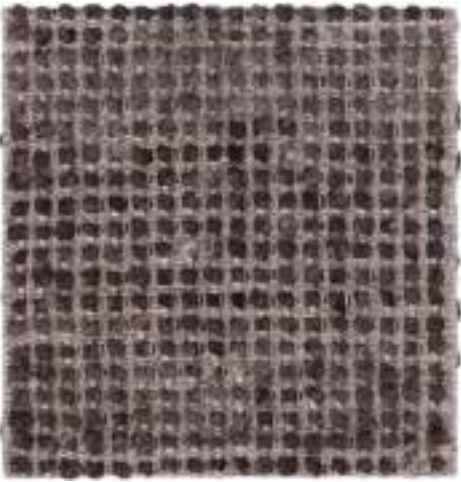


REFERENCE	SIZE	COLOR	CONTENT
32605	160 X 230 CM	SAND	50% COTTON, 30% WOOL, 20% JUTE

BLACK



BROWN



GREY



SAND



REFERENCE	SIZE	CONTENT
32605	40 X 40 CM	50% COTTON, 30% WOOL, 20% JUTE



About us

Hafizia Art & Crafts Pvt. Ltd. is an Indian export-oriented Company, producing an exclusive collection of hand-woven and hand-tufted Rugs and Carpets, along with a wide range of hand-made home furnishing accessories, Cushions, Poufs, Stools, Baskets, Handbags for instance. The company is a member of Good Weave International and the products are created respecting ecological & ethical values. With its foundation laid back in 1992 by H M Akram, in the hub of State government recognized city for Rug weaving, Sitapur (Uttar Pradesh), the company has since designed products that have reached 40+ countries globally.

Our Vision

To serve our mother earth by introducing upcycled & recycled products with minimum wastage of natural resources. Spreading our quality and innovative products worldwide, we aim high to meet the sustainable essentials true to consumer’s expectations

Our Mission

Exceeding customer’s expectations with constant innovations to be the foremost handwoven brand.

Our Values

We believe to grow bigger, together with our dedicated creative team & trusted clients. Our organization values crafting products best for our people and our planet.

Corporate Social Responsibility (CSR)

Hafizia has been doing impactful CSR activities for years now. We have educated about 200 children through its supplementary Learning Centers. We have always been very generous when it comes to voluntary contributions for social welfare, and we have taken more effective steps in the following areas.

- Promoting education amongst the children of weavers and the children residing locally nearby factory. Yearly academic fee, syllabus fee, including schools bags & stationery are provided as per requirement.
- Promoting gender equality and empowering women
- Supporting more than 1000 families indirectly
- Providing employment to around 500 people directly.
- Keeping our premises green, hence promoting environmental safety.
- Providing a healthy working environment to employees that can improve their productivity.



LOCATION & DETAILS

HEAD OFFICE:

785, Pakka Bagh, Old City, Sitapur - 261001, (U.P) India

info@hafizia.com

+91-5862272271
+91-5862270498



GREATER NOIDA UNIT:

H-158 UPSIDC Site-5 Kasna, Greater Noida - 201308, (U.P) India

parul@hafizia.com

+91-9871580998
+91-9919921650



FACTORY:

Salempur Aliraza Nagra Road, Sitapur - 261001 (U.P) India

info@hafizia.com

+91-5862272271
+91-5862270498



BHADOHI UNIT:

HIG 1st 28, New Jamnipur Colony, Bhadohi - 221401, (U.P) India

info@hafizia.com

+91-8423362409
+91-9415030462



CONNECT WITH US

- facebook
- Instagram
- www.hafizia.com
- info@hafizia.com





785, Pakka Bagh, Old City, Sitapur - 261001, (U.P) India

✉ info@hafizia.com, ☎ +91-5862 272271, +91-5862 270498

HafiZia™