

NEW EDITION EARLY SPRING+

AS SEEN IN

CHAPTER 05

INDOOR AND OUTDOOR DUAL USE

LOOKBOOK

INDOOR AND OUTDOOR DUAL USE

According to the trend, the epidemic era has made people and pets more eager to be close to nature. Develop pet products with cosiness and comfort in mind that offer flexibility of use both inside and out.

The focus of this issue is on several trends that consumers value, such as: indoor and outdoor use, detachable and washable, sturdy and waterproof, etc.

Care Culture: Action points

1

Blur indoor and outdoor

Tap into desire for high-performing yet simple products that are designed and able to seamlessly go from home to plane, van to camping

2

Design for multi-species living

Consider the intersection of human and animal needs to create beautiful and useful products for both pet and owner, especially when addressing high-traffic and shared interiors

3

Staycations for all

Incorporate elements of cosy getaways for owners and pets wary to travel – such as cabins, cottages and rustic experiences – in product design and material choices

4

Invest in artisanality

From food to fabrics, product development should reinforce important narratives around handmade creations and respect a natural grain, colour or imperfection



The top fluff cover can be removed

ZIP PET BEAN BAG

COLLECTIONS 01

ZIP PET BEAN BAG 01

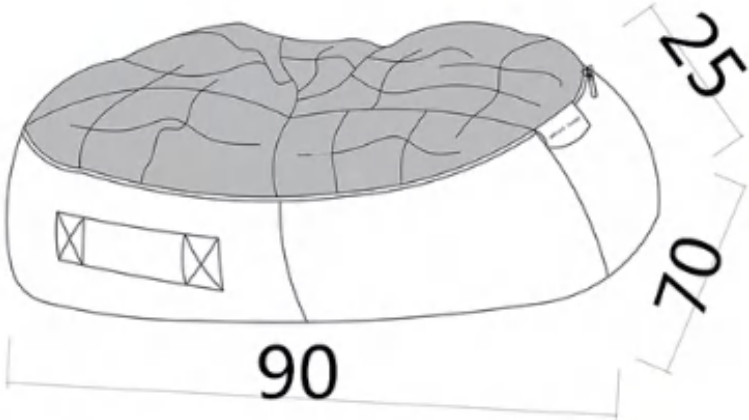
Perfectly designed to fit your pet bean bag, the spare cover is a practical way to refresh the look of your doggie's bed. Throw out the old one, or keep two to alternate between washing. Zip Off - Zip On...Your big pooch will love you for it.

Oh, how we love our pooches, so we spare nothing to give them the best in food, pampering and comfort. Of course they reward us with unconditional love and lots of slobber. But when they chew and pull on their beautiful Pet bed, making the fur top look like a cat that has been hit by a tornado, it can be soooo frustrating. Good news! Help is at hand in the form of a brand new spare fur top that will zip on in seconds to replace your chewed up remnant. Refresh you doggies bed at half the cost He or she will love you even more.

MATERIAL	Thick and luxurious faux fur + 600D Oxford fabric
FILLING	Shredded Orthopedic Foam and Shredded Memory Foam

Material can be changed according to your needs

Cool fabric with removable top



01. Zip Pet Bean Bag



OUTDOOR HUNDEBETT SIESTA

02

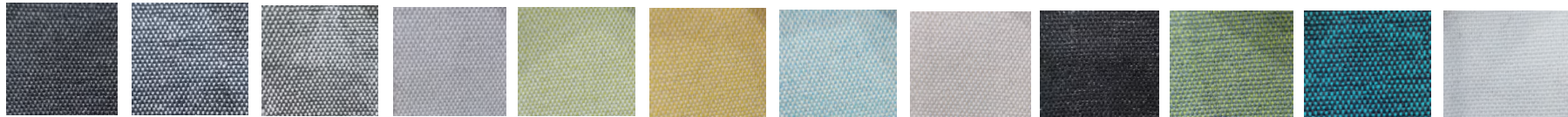
The elegant SIESTA PET BED with its reduced design and the attractive entry-level price offers the dog everything he needs. A robust outer fabric made of water-repellent and particularly easy-care material and a stable, hand-filled mattress that is very dimensionally stable and does not sag. The beautiful details of the two-sided handles made of solid webbing, kept tone in tone with the cover, round off the simple, beautiful look of this high-quality dog bed.

MATERIAL	Polyester Weave fabric, waterproof
FILLING	Polypropylene fibers

Material can be changed according to your needs



02. Outdoor Hundebett Siesta



THE SOOTHING CUSHION

03

We analysed the 2022 Heimtextil show, and elements such as camouflage animal prints, botanicals, bold stripes, boho and tropical palms are the key prints and patterns that stand out at the show

We predict that these elements will become the fashion trend of household products in 2023, so if the pattern style of pet products conforms to the fashion trend of household products, it will be more competitive in the market.

You can refer to the patterns we have designed, or let us design your own unique patterns for you.

MATERIAL	Polyester Weave fabric, waterproof
FILLING	Polypropylene fibers

Material can be changed according to your needs



03. THE SOOTHING CUSHION



Luxury Sleeper Dog Sofa 04

04. Luxury Sleeper Dog Sofa



Use PolyPropylene Fibers as a filling,
more economical

Using cut orthopedic foam,
handrails filled with PolyPropylene Fibers
More luxurious and comfortable

We also recommend the following fabrics



A.Peachskin Fabric



B.Plain Flocking



C.Furnishing Fabric

In the pet bed category of major e-commerce platforms, the sofa bed with armrests has always been a best-selling item. The encircling feeling of the armrest can bring a feeling of peace and comfort to the pet, which is more conducive to allowing the pet to adapt to the new environment and maintain a relaxed mood.

For consumers who love animals, preparing a sofa-like sleeper bed for pets is undoubtedly the best way to express love.

We have several different cost schemes to make products, welcome to consult with us

DIMENSIONS

Small: 20'' L x 30'' W x 8'' H (outside) 14'' L x 19'' W (inside)

Large: 30'' L x 40'' W x 11'' H (outside) 20'' L x 26'' W (inside)

X-Large: 36'' L x 54'' W x 13'' H (outside) 24'' L x 34'' W (inside)

MATERIAL	Waterproof Oxford cloth
FILLING	Polypropylene fibers

Material can be changed according to your needs

POOL&PATIO ROUND DOG BED

05

Pet beds filled with small particle orthopedic foam and memory foam are our specialty products. This padding gives the pet bed high support and the comfort of memory foam. And compared to the whole piece of cut foam, the inner core made of small particle foam is more affordable.

This product is suitable for both indoor and outdoor use. We have made PVC waterproof coating on the outer cover, and the fabric will become hard and waterproof.

Pool & Patio Round Bed Sizes:			
Small:		Large:	
Diameter: 23 inches Sidewall: 4 inches		Diameter: 45 inches Sidewall: 4 inches	
Medium:		X-Large:	
Diameter: 35 inches Sidewall: 4 inches		Diameter: 50 inches Sidewall: 4 inches	

MATERIAL	Polyester cotton canvas (PVC waterproof coating)
FILLING	small particle orthopedic foam and memory foam

Material can be changed according to your needs



05 .Pool&Patio Round Dog Bed



DOUBLE SUPPORT TRAVEL BED

06

A soft top fabric with an easy-to-clean base fabric is a must for indoor and outdoor pet beds. The top of the bed is filled with elastic and soft Polypropylene fibers, and the bottom fabric is filled with a whole piece of orthopedic foam, which increases the support of the bed and ensures soft comfort.

We believe that sponge is a more pet-friendly and luxurious material in the minds of consumers. The combination of Polypropylene fibers and orthopedic foam of this product not only reduces costs but also maintains its selling point. And it is more comfortable to use.

MATERIAL	Micro Suede+Oxford(waterproof and easy to clean)
FILLING	Polypropylene fibers+orthopedic foam

Material can be changed according to your needs



CAMPING DOG MAT

07

Lightweight and portable, yet still comfortable!

Can be used both indoors and outdoors, and even fits in a crate. When it is rolled up, it is very easy to store and carry. Perfect for camping, travel, car back seat and indoor use.

Functional, easy to wash, lightweight and comfortable to use - we recommend this competitive product to you

MATERIAL	Linen Type Cloth
FILLING	Polypropylene Fibers

Material can be changed according to your needs



26"L x 40"W x 1.2"Th

07.Camping Dog Mat



PET COOLING PAD 09



Popular products of summer 2022!

As the global weather warms and the temperature in spring and summer is higher, the demand for cooling products in the pet industry will increase year by year.

Our cool fabrics are not ordinary "coating cooling aids on the fabric", our fabrics are woven from cool yarns with cooling function. It stays cool longer and doesn't lose its effectiveness gradually with washing.

The cooling pad can be used alone or with other pet beds, or even you can make the cooling fabric into a pet bed, we are always looking forward to your new ideas

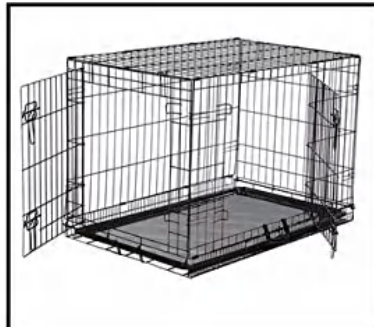
35.04"L x 22.05"W x 0.39"Th

MATERIAL

Cooling fabric+Velveteen (Velvet-Plain)

FILLING

spray-bonded cotton



Material can be changed according to your needs

09. Pet Cooling Pad

FOLDABLE PET KENNEL

08

Further upgrade the travel pet products!

According to Hilton's 2022 Global Trends report, 65% of Americans said they would like to travel with pets, and according to statistics collected by British company Cofton Holidays, searches for the term "vacation for dogs" increased by 665%.

This product has more functions and is suitable for car, carrying and camping. It's still an excellent indoor kennel when you're not out.

The key point is that this product is designed to be an iterative upgrade of what is on the market, and it will make your brand even more impressive

MATERIAL	Polyester Taffeta
FILLING	spray-bonded cotton

Material can be changed according to your needs



Easy to install and fold



23.6"L x 18.9"W x 6.7"Th 08. Foldable Pet Kennel

PET KNEE PADS

10

The dog leg joint sleeve is made of cotton and polyester fabric, a soft, comfortable, breathable, and flexible material, that keeps your pet's wound clean and prevents the dog from licking the wound and causing wound infection. The dog recovery sleeve is machine washable and reusable.

There is an extra thick patch for the joint area. Great protection for the dog after surgery. The padded mesh fabric is breathable and can effectively help to reduce pain and inflammation.

SIZE:

S: A22cm B18cm C12cm M: A28cm B26cm C14cm

L: A31cm B30cm C17cm XL: A38cm B35cm C20cm

XXL: A42cm B40cm C22cm



MATERIAL	cotton and polyester fabric
FILLING	spray-bonded cotton

Material can be changed according to your needs



10.Pet Knee Pads